

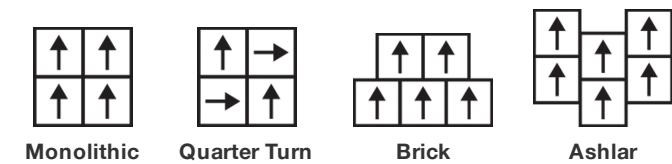
Honed Tile

Type De Produit	Dalles De Moquette
Collection	Noble Materials
Numéro Du Style	5T134
Construction	Tufté Bouclé Rasé Structuré à Motif
Fibre	Ecosolution Q100™ Nylon
Méthode De Coloration	100% Solution Teinte
Sous-couche Primaire	Synthétique
Sous-couche Secondaire	Dalle Ecoworx®
Traitements Protecteurs	SSP® Shaw Protection Du Sol
Adhésif Recommandé	LokDots, 3000 Carpet Tile 1 Gallon, 4151 Multi-Use Carpet Tile 4 Gallon, 5000 Carpet Tile 1 Gallon, LokWorx Adhesive Tabs, 3800 Indoor Outdoor Carpet Tile 4 Gallon, 5000 Carpet Tile 4 Gallon or 3000 Carpet Tile 4 Gallon

	u.s.	metric
Dimensions Du Produit	24 in x 24 in	61 cm x 61 cm
Surface Par Carton	48 ft²	4.46 m²
Pièces Par Carton	12 pcs	
Jauge	1/10 in	39.4 per 10 cm
Points	8.0 per in	32.5 per 10 cm
Densité Moyenne	7467 oz/yd³	0.276 g/cm³
Kilotex		7.75
Epaisseur Du Velours	0.315 in	8 mm
Poids Tufté	28 oz/yd²	949.4 g/m²



Méthodes d'Installation Conseillées



Données + Tests Et Essai

Panneau Rayonnant (Astm E648)	Class I
Nbs Smoke	Less Than 450
Propension Electrostatique	Less Than 3.5 kv
Label Cri Green Label Plus (Glp)	USA GLP9968   China GLP1263
Test d'Inflammabilité	Pass*
Ada Compliance	>0.6, Meets the recommended static coefficient of friction for ADA walking surfaces and accessible routes***

Test Reports may be included or listed by the manufacturing/inventory style number as opposed to the noted selling style number.

Garanties

Durée De Vie Commerciale Limitée

Coordination Des Produits

Carpet Tile: **Slab Tile, Alchemy Tile, Form Tile**  
Broadloom: **Monolith Woven, Base Metal Woven, Strata, Fault**

Attributs + Certifications

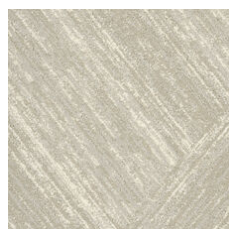
Certifications Below Apply Exclusively To The Carpet Tile Rug Itself And Not The Lokworx Tabs Adhesive

Certification Cradle to Cradle™ (C2C)	<b>Silver Level (Version 4.0)</b>
Déclaration sanitaire de produit (HPD)	<b>Transparence 1 000 ppm</b>
Déclaration environnementale de produit (EPD)	<b>Certifié Par Un Organisme Tiers Conformément Aux Normes ISO14044, ISO 14025 &amp; EN15804</b>
Embodied Carbon (Cradle to Gate)	<b>5.22 kg CO<sub>2</sub>/m<sup>2</sup></b>
Life-Cycle Carbon Emissions	<b>Carbon Neutral</b>
Living Building Challenge (LBC)	<b>Free of Red List Chemicals</b>
Déclarer	<b>USA LBC Compliant   China LBC Compliant</b>
NSF 140	<b>or</b>
CRI Green Label Plus (GLP)	<b>USA GLP9968   China GLP1263</b>
Singapore Green Label	<b>Certifié</b>
Label CE (EN 14041)	<b>Certifié Par Un Organisme Tiers</b>
garantie environnementale	<b>Re[turn] Reclamation Program*   Through Our Environmental Guarantee, Shaw Pledges to Transport And Recycle Any Ecoworx Carpet.</b>
	<b>63% (Pre-Consumer 63%   Post-Consumer 0%)</b>
	<b>100% Recyclable</b>
	<b>USA &amp; China</b>
contenu recyclé total	
emballage du produit	
pays d'origine	

Contribution À La Certification Lead

MR Credit: Building Product Disclosure and Optimisation Environmental Product Declarations - Option 1: Environmental Product Declaration (EPD)	<b>3rd Party Certified in Accordance with ISO14044, ISO14025 &amp; EN15804</b>
MR Credit: Building Product Disclosure and Optimisation Material Ingredients - Option 1: Material Ingredient Reporting	<b>C2C Silver Level (Version 4.0) or HPD (Version 2.1)</b>
MR Credit: Building Product Disclosure and Optimisation Material Ingredients - Option 2: Material Ingredient Optimization	<b>C2C Silver Level (Version 4.0)</b>
MR Credit: Building Product Disclosure and Optimization Sourcing of Raw Materials - Option 2: Leadership Extraction Practices	<b>Environmental Guarantee: Re[turn] Reclamation Program*   Through Our Environmental Guarantee, Shaw Pledges to Transport And Recycle Any Ecoworx Carpet.</b>
"Crédit EQ : matériaux faibles émissions Option 1 : calculs par catégorie de produit"	<b>Certified</b>
MR Credit: Interiors Life-Cycle Impact Reduction Option 3: Design for Flexibility	<b>Ecoworx Tile with Lokdots Installation System</b>

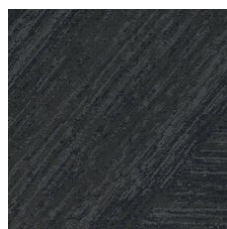
### Indice De Réflexion Lumineuse



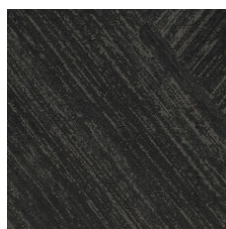
Carrara 33100  
LRV 48.5



Alabaster 33111  
LRV 24.3



Colossal 33496  
LRV 3.1



Onyx 33505  
LRV 2.4



Element 33506  
LRV 15.9



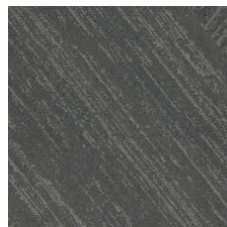
Forge 33518  
LRV 14.5



Talc 33535  
LRV 18.6



Cornerstone 33555  
LRV 7.4



Slate 33595  
LRV 5.7

### Informations Supplémentaires

\* To learn more about the recyclability of our products and our re[TURN], please visit [shawcontract.com/sustainability](https://shawcontract.com/sustainability).

\*\*Meets or exceeds all local and national regulations in country of manufacture.

\*\*\*This carpet is manufactured to be ADA compliant, but to be fully ADA compliant, the end-user must ensure the carpet is adhered to the floor and installed as outlined in the ADA standards.

[Installation Guidelines](#)

[Maintenance Guidelines](#)

Specifications are subject to nominal manufacturing variance. Material supply and/or manufacturing processes may necessitate changes without notice.

This product is an exclusive design and may not be duplicated in any manner. Use of this design in the creation of another product design is also strictly prohibited.

Visit [shawcontract.com/testing](https://shawcontract.com/testing) for more information.



**PVC-Free**

Corporate Headquarters +1 800 257 7429 | +1 706 532 7984 | Atlanta +1 404 853 7429 | Bengaluru +91 80 6773 0202 | Beijing +86 10 6568 588 | Chicago +1 312 467 1331 | Dubai +971 4 584 6956 | Hong Kong +852 2623 0371 | Latin America (Miami) +1 305 827 5912 | London +44 207 961 4120 | Los Angeles +1 800 233 1614 | Melbourne +61 3 9939 8543 | Mexico City +55 5010 7600 | Mumbai +91 22 6284 5050 | Nantong +86 400 800 7429 | New York +1 212 953 7429 | Paris +33 (0) 1 81 22 44 39 | San Francisco +1 415 955 1920 | Santiago +562 2431 5000 x 550 | São Paulo +55 11 3071 1702 | Shanghai +86 21 3338 4000 | Singapore +65 6733 1811 | Sydney +1 800 556 302

© 2024 Shaw Industries Group, Inc., a Berkshire Hathaway Company  
May 15, 2024

3 of 3